



Liza Ryan, *It's Only the Light*, 2010, Chromatic print

## **MEDIA RELEASE**

### Press Contacts:

Kathy MacPherson, Ben Maltz Gallery  
Otis College of Art and Design  
9045 Lincoln Blvd, Los Angeles, CA 90045  
[kmacpherson@otis.edu](mailto:kmacpherson@otis.edu) / 310.665.6909

Peter M. Warren, Loyola Marymount University  
1 LMU Drive, Suite 2800, Los Angeles, CA 90045  
[peter.warren@lmu.edu](mailto:peter.warren@lmu.edu) / 310.338.2389

### FOR IMMEDIATE RELEASE:

**Loyola Marymount University's Laband Art Gallery and Otis College of Art and Design's  
Ben Maltz Gallery  
present:**

### ***Tapping the Third Realm***

*An exhibition spanning two galleries and college campuses exploring the spiritual, metaphysical and alchemical in contemporary art.*

*On view September 22 – December 8, 2013*

LOS ANGELES – 15 August 2013 – The Laband Art Gallery at Loyola Marymount University (LMU) and the Ben Maltz Gallery at Otis College of Art and Design (OTIS) are pleased to present an exhibition of contemporary art entitled *Tapping the Third Realm* on view September 22 through December 8, 2013. Opening reception takes place on the fall equinox, Sunday, September 22, 3pm-6pm (3pm-5pm OTIS; 4pm-6pm LMU) followed by three months of related exhibition programming listed below.

A large group exhibition, *Tapping the Third Realm* presents the work of thirty-four artists who deal with ideas of spirituality through four main avenues: conjuring, communication, collaboration and chance. It explores how artists tap into another dimension, whether it be a place of spirits, ideas of heaven, or the collective unconscious. Elements of magic, witchcraft, and profound attention or intuition are evident in the artists' creative processes. In this collection of work there are portals to the spirit world, communications with the dead, spells manifested in glass, prayers as drawings, potions as paintings, and dreams transformed into sculpture. This exhibition is curated by Meg Linton, Director of Galleries and Exhibitions, Ben Maltz Gallery, Otis College of Art and Design and Carolyn Peter, Director and Curator, Laband Art Gallery, Loyola Marymount University.

**Artists in the Exhibition:** [Ruth Ann Anderson](#), [Annie Buckley](#), [Christopher Bucklow](#), [John Cage](#), [Linda Ekstrom](#), Clodagh Emoe, [Amanda Yates Garcia](#), [Cliff Garten](#), [Cheri Gaulke](#), [Zach Harris](#), Philip Havice, [Alicia Henry](#), [Gilah Yelin Hirsch](#), [Kyle August Lind](#), [David Lloyd](#), [Dane Mitchell](#), [Christina Ondrus](#), [Naida Osline](#), [Sohan Qadri](#), [Ron Regé, Jr.](#), [Ross Rudel](#), [Liza Ryan](#), [Betye Saar](#), [Marie Schoeff](#), [Kenzi Shiokava](#), [Linda Stark](#), [Andrés Torres-Vives](#), [Dani Tull](#), [Linda Vallejo](#), [Anne Walsh](#) and [Chris Kubick](#), [Bryan McGovern Wilson](#), [Tom Wudl](#), and [Rebecca Tull Yates](#).

**Public Programming:**

Sunday, September 22, Free

**Opening Reception – Fall Equinox**

OTIS Ben Maltz Gallery 3pm-5pm / LMU Laband Art Gallery 4pm-6pm

Meet the artists and join us for a ritual art performance by the Mythic Players, sponsored by Temple of the Goddess, directed by Xia and Ananda at 3:15pm (OTIS) and 4:45pm (LMU).

Tuesday, September 24, 12:15pm-1:15pm, Free

**Gallery Talk by British artist Christopher Bucklow and New Zealand artist Dane Mitchell**

LMU Laband Art Gallery. Sponsored by LMU's College of Communication and Fine Arts Visiting Artists and Lecture Series.

Wednesday, October 16, 6pm, Free with reservation

**A Literary Evening with Author Alicia Gaspar de Alba**

LMU William H. Hannon Library, Von der Ahe Suite, 3rd Floor

RSVP 310.338.5234 or [library.lmu.edu/rsvp](http://library.lmu.edu/rsvp)

Alicia Gaspar de Alba reads from her book *Calligraphy of the Witch* (2012) followed by a conversation with *Tapping the Third Realm* curators Meg Linton and Carolyn Peter. This event is co-sponsored by LMU's William H. Hannon Library, Laband Art Gallery, Chicana/o Studies, and Chicano Latino Student Services, and OTIS Ben Maltz Gallery.

Friday, October 18, 7-9pm, Free

**Full Moon Event I: The Summoning – a site specific theatrical performance**

Starts at LMU Laband Art Gallery

Under the direction of Professor Kevin Wetmore, LMU Theatre Arts students perform a site-specific Renaissance-inspired work at LMU's Laband Art Gallery and lead the audience on a spiritual and physical journey to the OTIS Ben Maltz Gallery. Program begins at LMU at 7pm and finishes at OTIS by 9pm. Dress for the evening weather and wear walking shoes.

Saturday, November 9, 2pm, Free

**Exploration of the Labyrinth with artist Linda Ekstrom**

Starts at Crescent Park West in Playa Vista (between Pacific Promenade and Bay Park Drive, Playa Vista 90094, street parking)

Artist Linda Ekstrom shares the history of the labyrinth as a tool for meditation and prayer. Meet at the Playa Vista Labyrinth designed by Beth Thielen at Crescent Park at 2pm. Afterwards join curators Meg Linton and Carolyn Peter for a tour of *Tapping the Third Realm* at LMU's Laband Art Gallery and OTIS Ben Maltz Gallery.

Saturday, November 16, 9am-4pm, \$75 with registration

**Tapping the Third Realm with Artist Ruth Ann Anderson: Creating an Artist Book**

OTIS Ahmanson Hall, 1<sup>st</sup> Floor Check-in

A workshop focused on accessing your spiritual self through the creation of a handmade artist book. Explore a spiritual approach to art-making including use of self-reflection, transformation, and the cyclical nature of the full moon. Class materials included. To register: 310 665 6950 or [www.otis.edu/ce](http://www.otis.edu/ce) [Reg# 25401 / non-credit]

Sunday, November 17, 4pm-6pm, Free

**Full Moon Event II: The Atomic Priesthood**

Starts at OTIS Ben Maltz Gallery

Join New York based artist Bryan McGovern Wilson on a journey from the Ben Maltz Gallery to the Laband Art Gallery filled with obstacles and devotion led by an Atomic Priest and overseen by the moon. *The Atomic Priesthood* is an ongoing, multidisciplinary art project that draws from the unique history and conditions of nuclear waste management. This ritual/performance is steeped in ecological stewardship, advocacy, and strategies for deep-time communication. Program begins at OTIS at 4pm and finishes at LMU by 6pm. Dress for the late afternoon weather and wear walking shoes.

Sunday, December 8, 12pm-4pm, Free

**Closing reception for Tapping the Third Realm**

OTIS Ben Maltz Gallery and LMU's Laband Art Gallery

Artist Amanda Yates Garcia is the City Oracle ready to answer questions at LMU while at OTIS Annie Buckley offers a brief history and readings from her new project "The People's Tarot" and Guru Rugu hosts *the experimental meditation center of los angeles* for a closing ceremony of group realm-tapping.

OTIS and LMU are pleased to partner this fall on a larger series of free community events called **SPACES BETWEEN**, a series of exhibitions, performances, talks, rituals, and workshops that explore dimensions of the supernatural. Visit the program website for more details: [www.lmu.edu/spacesbetween](http://www.lmu.edu/spacesbetween)

Also on view this Fall at OTIS and LMU:

**Crossing Thresholds: An Entry into Gothic Fiction, September 12 – December 13, 2013**

**LMU William H. Hannon Library, 3<sup>rd</sup> Floor**

This exhibition, curated by Alexandra Halicki, graduate student in LMU's English Department, explores the literary Gothic as a *threshold genre*. The threshold, literally a space-between-spaces, is a metaphorical realm of tremendous power and possibility. It is a region of monsters and of the supernatural. Featuring rare works from LMU's Terrance L. Mahan, S.J. Department of Archives and Special Collections, it also includes photographs by Lisa Nicchi, LMU Class of 2013.

Exhibition Hours: Mon-Fri 8am-5pm

**Chance Operations, Random Access, September 22 – December 8, 2013**

**OTIS Millard Sheets Library**

Librarian Cathy Chambers uses John Cage's *Rolywholyover: a Circus* and his reliance on the I-Ching as a methodology to randomly access and display a selection of artists' books from the Otis Library's Special Collections. Exhibition Hours: Mon-Thu 7:30am-10pm; Fri 7am-5:30pm; Sat 10:15am-3pm; Sun 12:15pm-5pm.

**Gallery Locations, Hours, and Parking:**

**Ben Maltz Gallery**

**Otis College of Art and Design**

9045 Lincoln Blvd, Los Angeles, CA 90045

Hours: Tue-Fri 10-5; Thu 10-9; Sat-Sun 12-4

Closed Mon, Nov 27-Dec 1

Free Admission & Parking

Contact: 310.665.6905

[galleryinfo@otis.edu](mailto:galleryinfo@otis.edu)

[www.otis.edu/benmaltzgallery](http://www.otis.edu/benmaltzgallery)

**Laband Art Gallery**

**Loyola Marymount University**

**College of Communication and Fine Arts**

1 LMU Drive, Los Angeles, CA 90045

Hours: Wed-Sun 12-4

Closed Mon-Tue, Nov 27-Dec 1

Free Admission & Parking on Weekends

Contact: 310.338.2880, [Carolyn.Peter@lmu.edu](mailto:Carolyn.Peter@lmu.edu)

<http://cfa.lmu.edu/labandgallery/>

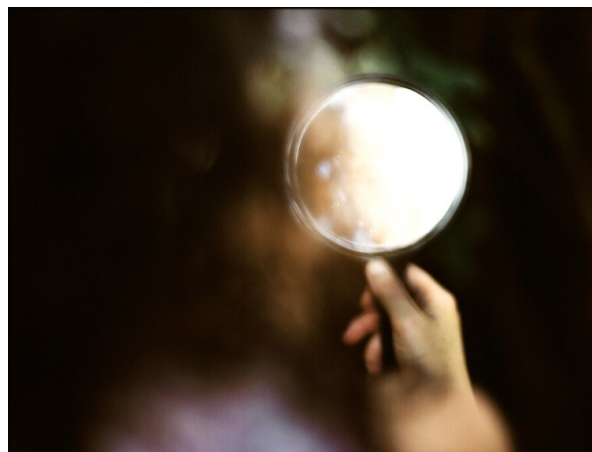


### About Otis College of Art and Design

Otis prepares diverse students of art and design to enrich our world through their creativity, their skill, and their vision. Otis College of Art and Design is a non-profit 501(c)3 institution founded in 1918 by General Harrison Gray Otis, the founder and publisher of the *Los Angeles Times*, who bequeathed his L.A. home to the city for "the advancement of the arts." The College offers BFA and MFA degrees accredited by the Accrediting Commission for Senior Colleges and Universities of the Western Association of Schools and Colleges and The National Association of Schools of Art and Design (NASAD). Otis is a member of the Association of Colleges of Art and Design.

### About Loyola Marymount University

Located between the Pacific Ocean and downtown Los Angeles, Loyola Marymount University is a comprehensive university offering 60 major programs, 36 master's degrees and a doctoral degree in education from four colleges, two schools and Loyola Law School. Founded in 1911, LMU is ranked third in "Best Regional Universities/West" by U.S. News & World Report. LMU is the largest Jesuit Catholic university for undergraduates on the West Coast with more than 5,900 undergraduate students and more than 3,000 graduate and law students. For more LMU news and events, please visit [www.lmu.edu/news](http://www.lmu.edu/news).



**Top row L-R:** Linda Stark, *Spectacled Cobra*, 2005, oil on canvas over panel; Rebecca Tull Yates, *Untitled (from the underwater series)*, 2012, digital C-print; Gilah Yelin Hirsch, *The Duality of At-One-Ment*, 1979, oil on canvas. **Bottom:** David Lloyd, *Yellow Death*, 2013, mixed media on wood; Liza Ryan, *Hover*, 2010, pigment print; Linda Vallejo, *Arco Iris*, 2008, oil on canvas.